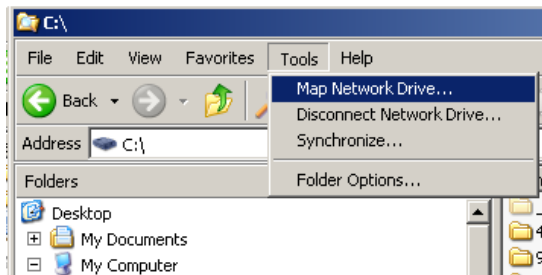
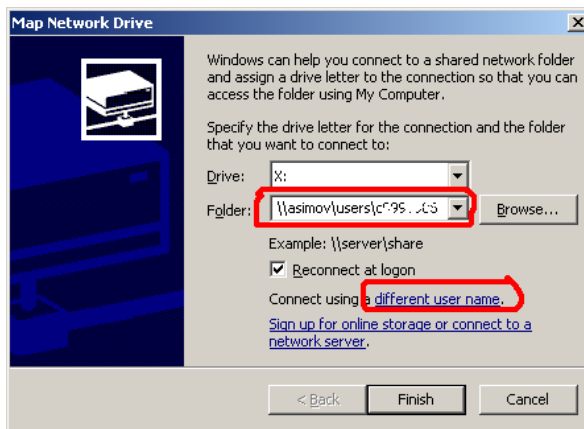


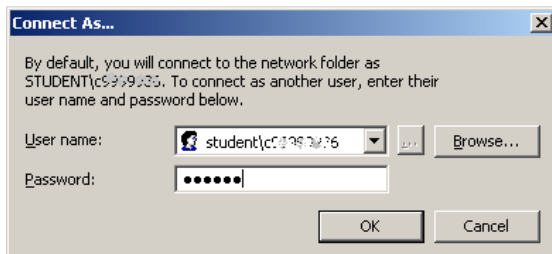
1. In Windows Explorer select the Tools | Map Network Drive... menu



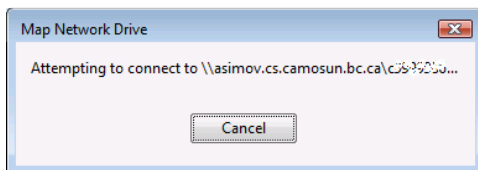
2. Select the Drive letter. In the Folder textbox enter \\asimov\users\c0#### (where c0#### is your Camosun student number. Click on the link to "Connect using a different user name."



3. In the Connect As... window enter your User name as STUDENT\c0#####, where c0#### is your student number. Enter your student password. Click OK, then click Finish.



4. The system will show this dialog while it attempts to connect.



5. When the connection is established, the selected drive letter will be the Asimov account share.